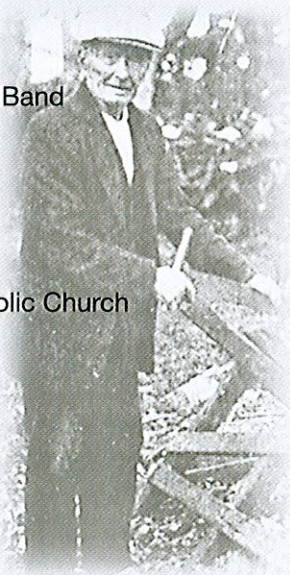


# SIGN LOCATIONS

1. The Entrance Surf Club
2. The Entrance Ocean Baths
3. Relaxing on the Beach
4. Early Surf Carnival at The Entrance
5. The Entrance Beach in the 1940's
6. The Entrance Amateur Swimming Club
7. The Memorial Park - Circa 1960
8. Karagi Point
9. Fishing Made Easy
10. Old Rotunda
11. Francis Norman "Tim" Farrell MBE
12. The Entrance Dairy
13. Off to the Beach
14. Fishing Frenzy
15. Original South Channel
16. Channel as it was
17. The Entrance Mardi Gras
18. Bus in Freak Crash
19. Looking North from The Entrance Channel 1910
20. Fishing on Tuggerah Lake
21. Uncle George
22. Floods of 1949 at The Entrance
23. Overlooking the Channel from Elm's Guesthouse
24. Pine Trees on The Entrance Channel
25. Tent City
26. Boat Mooring in The Entrance Channel
27. Camping on the Headland
28. Dunleith Wharf
29. The Entrance North
30. 1947 Tuggerah Lakes District Band
31. Tuggerah House
32. Ambulance Carnival
33. Bartons Carnival
34. Golden Gate Cafe
35. The Lakes Hotel
36. Newlings Bakery
37. Our Lady of The Rosary Catholic Church
38. The Entrance Cricket Ground
39. Tuggerah Lakes Golf Club
40. The Entrance Public School
41. All Saints Anglican Church
42. Relocating the old Presbytery
43. The Entrance Brickworks
44. Seargents Bus Depot



45. Lorna Doon Boarding House
46. Stewarts Store
47. Early Police Officers
48. Arthur G Chipperfield
49. HM Chalmers Chemist
50. Prince Edward Thearte
51. Commonwealth Bank
52. Catholic School Housie
53. Bayview Guest House
54. Allambe Guest House
55. Cenotaph
56. The Entrance Historical Carousel
57. Page's Liquor Store
58. First Bank
59. Duffy's Emporium
60. The Home of Austin and May Taylor
61. Dunleith Guesthouse
62. Waterfront Plaza
63. Post Office
64. The Entrance Hotel
65. The Wintergarden
66. A.H. Pearce Chemist
67. Cabeethon Guest House
68. The Entrance Wooden Bridge
69. The Entrance Boat House
70. Waiwera Guest House
71. Koonya Guest House
72. Lakeside Guest House
73. Pinehurst
74. Original Dredge
75. Taylors Wharf

